



# Epac Polyclonal Antibody

<b>Catalog No</b>	YP-Ab-16155
<b>Isotype</b>	IgG
<b>Reactivity</b>	Human;Mouse;Rat
<b>Applications</b>	WB;ELISA
<b>Gene Name</b>	RAPGEF3
<b>Protein Name</b>	Rap guanine nucleotide exchange factor 3
<b>Immunogen</b>	The antiserum was produced against synthesized peptide derived from human RAPGEF3. AA range:712-761
<b>Specificity</b>	Epac Polyclonal Antibody detects endogenous levels of Epac protein.
<b>Formulation</b>	Liquid in PBS containing 50% glycerol, 0.5% BSA and 0.02% sodium azide.
<b>Source</b>	Polyclonal, Rabbit,IgG
<b>Purification</b>	The antibody was affinity-purified from rabbit antiserum by affinity-chromatography using epitope-specific immunogen.
<b>Dilution</b>	Western Blot: 1/500 - 1/2000. ELISA: 1/40000. Not yet tested in other applications.
<b>Concentration</b>	1 mg/ml
<b>Purity</b>	≥90%
<b>Storage Stability</b>	-20°C/1 year
<b>Synonyms</b>	RAPGEF3; CGEF1; EPAC; EPAC1; Rap guanine nucleotide exchange factor 3; Exchange factor directly activated by cAMP 1; Exchange protein directly activated by cAMP 1; EPAC 1; Rap1 guanine-nucleotide-exchange factor directly activated by cAMP;
<b>Observed Band</b>	100kD
<b>Cell Pathway</b>	Endomembrane system .
<b>Tissue Specificity</b>	Widely expressed with highest levels in adult kidney, heart, thyroid and brain, and fetal kidney.
<b>Function</b>	caution:It is uncertain whether Met-1 or Met-43 is the initiator.,domain:The DEP domain is involved in membrane localization independent from regulation by cAMP.,function:Guanine nucleotide exchange factor (GEF) for RAP1A and RAP2A small GTPases that is activated by binding cAMP.,similarity:Contains 1 cyclic nucleotide-binding domain.,similarity:Contains 1 DEP domain.,similarity:Contains 1 N-terminal Ras-GEF domain.,similarity:Contains 1 Ras-GEF domain.,tissue specificity:Widely expressed with highest levels in adult kidney, heart, thyroid and brain, and fetal kidney.,
<b>Background</b>	caution:It is uncertain whether Met-1 or Met-43 is the initiator.,domain:The DEP domain is involved in membrane localization independent from regulation by



cAMP.,function:Guanine nucleotide exchange factor (GEF) for RAP1A and RAP2A small GTPases that is activated by binding cAMP.,similarity:Contains 1 cyclic nucleotide-binding domain.,similarity:Contains 1 DEP domain.,similarity:Contains 1 N-terminal Ras-GEF domain.,similarity:Contains 1 Ras-GEF domain.,tissue specificity:Widely expressed with highest levels in adult kidney, heart, thyroid and brain, and fetal kidney.,

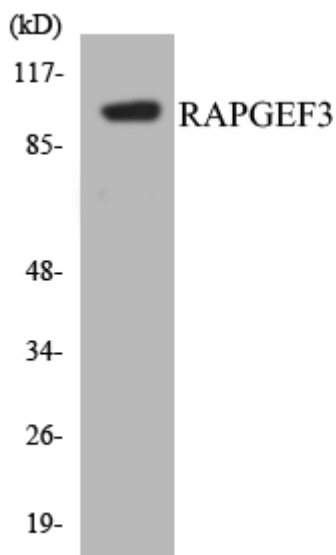
**matters needing attention**

Avoid repeated freezing and thawing!

**Usage suggestions**

This product can be used in immunological reaction related experiments. For more information, please consult technical personnel.

## Products Images



Western blot analysis of the lysates from HeLa cells using RAPGEF3 antibody.